

Math at Stephen Lewis

Stephen Lewis offers math courses that enhance the pathways choices of each student. Courses are offered at the Applied and Academic level in Grades 9 and 10 and at the College, University and Workplace level in Grade 11 and 12.

The program incorporates a high degree of technology. Students have access to graphing technology, computer-algebra systems, and a computer lab equipped with the a wide variety of software.



Some of the technology used by students in math.



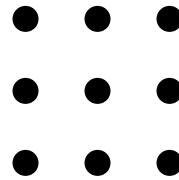
Stephen Lewis Secondary School

Learning For All

There is a math problem of the week available for all students to solve. A winner is selected from all correct entries.

Here's a past problem:

Connect all the dots below with only four straight lines without ever lifting your pencil



Students also have the opportunity to participate in a wide variety of math contests as well as be a part of the best club in the school—
THE MATH CLUB!

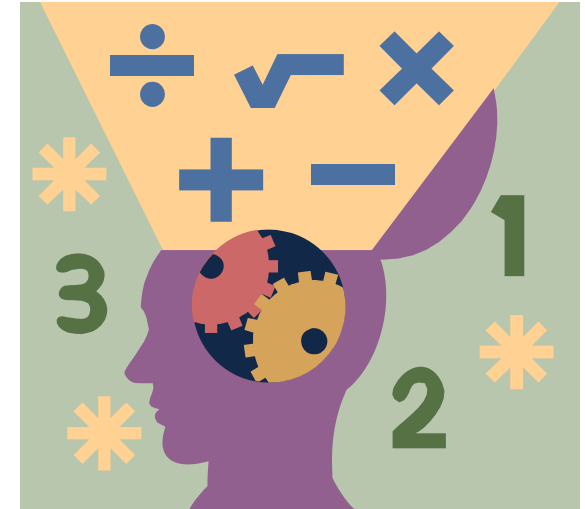
Stephen Lewis
Secondary School

3675 Thomas Street
Mississauga, ON
L5M 7E6

Phone: 905-363-0289
Email: stephenlewis.ss@peelsb.com
Web: <http://stephenlewis.peelschools.org>



Mathematics
Department

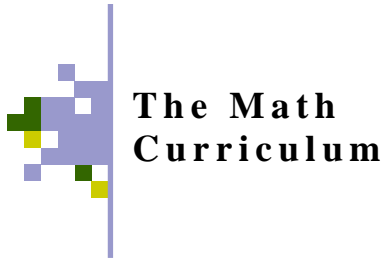


Stephen Lewis
Secondary School



Community—
Excellence—
Respect

Tel: 905-363-0289



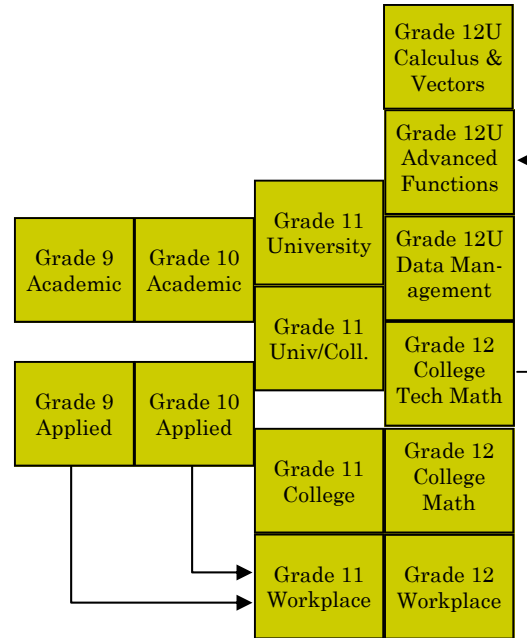
The Math Curriculum

The Course Selections for High School Math

What's the difference between applied and academic?

An **Applied Course** covers the key concepts of a subject. Knowledge and skills will be developed through both theory and practical applications, but the focus will be on practical applications. In applied courses, familiar, real-life situations will be used to illustrate ideas, and you will be given more opportunities to experience hands-on applications of the concepts you study.

In an **Academic Course** you will learn the key concepts of a subject and explore related material as well. Although the knowledge and skills in the subject will be developed through both theory and practical applications, the emphasis will be on theory and abstract thinking as a basis for future



A half credit transfer course is available for students wishing to go from Grade 9 Applied to Grade 10 Academic.

When selecting which level to take students and parents should consider two factors: which course will allow them the greatest opportunity for success and which course do they need.

Upon entering Grade 9 students should give higher priority to which course will allow them a greater chance of success.

There are many different pathways after Grade 9 that allow students to switch levels if desired as they start to determine what courses they need.

Students and parents should also consult their Grade 8 math teacher for their recommendation.

Students are required to have three credits in math (one of which must be at the senior level) for their high school diploma.

Stephen Lewis
Secondary School

3675 Thomas Street
Mississauga, ON
L5M 7E6

Phone: 905-363-0289
Email: stephenlewis.ss@peelsb.com
Web: <http://stephenlewis.peelschools.org>